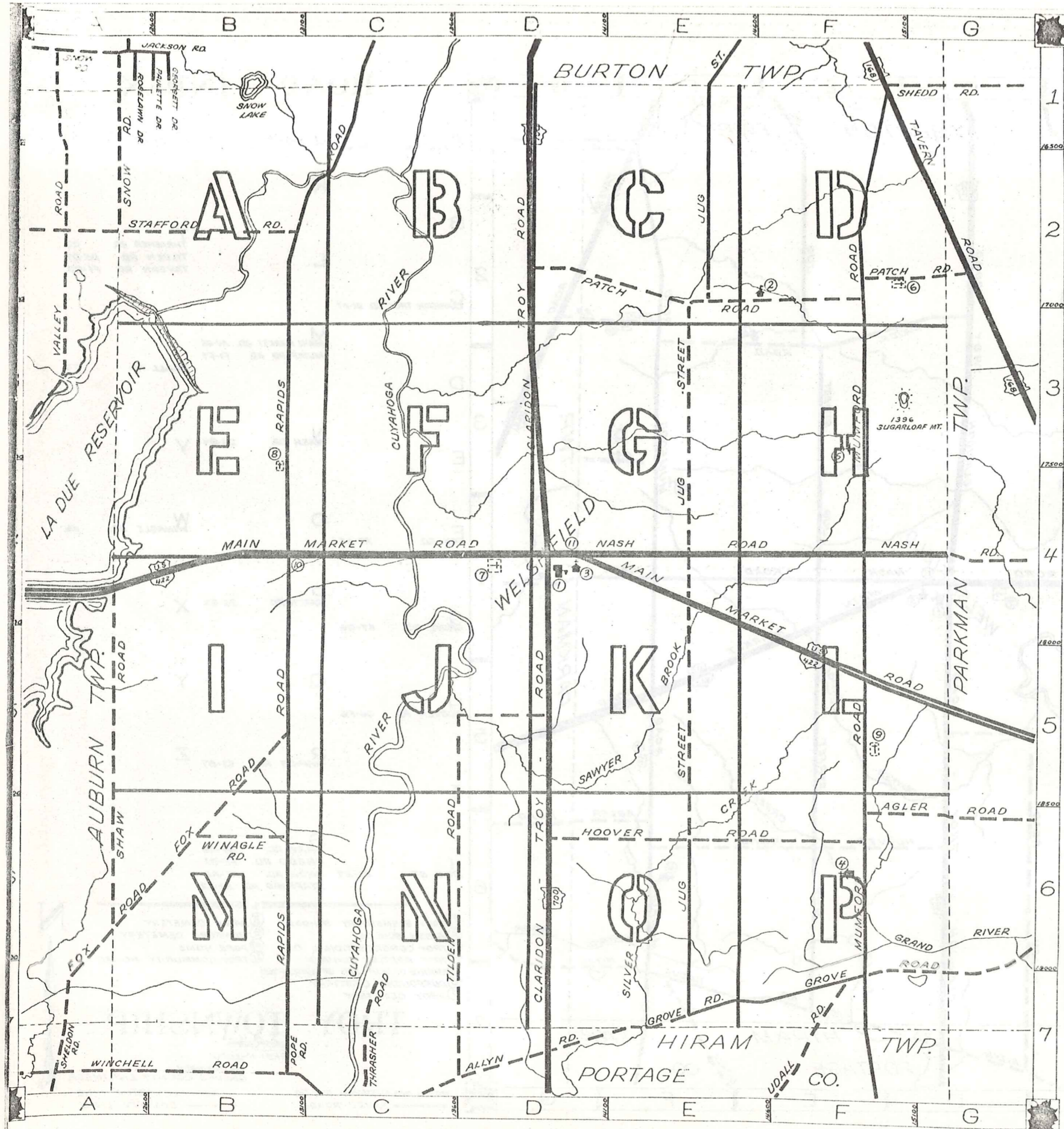


ROAD INDEX



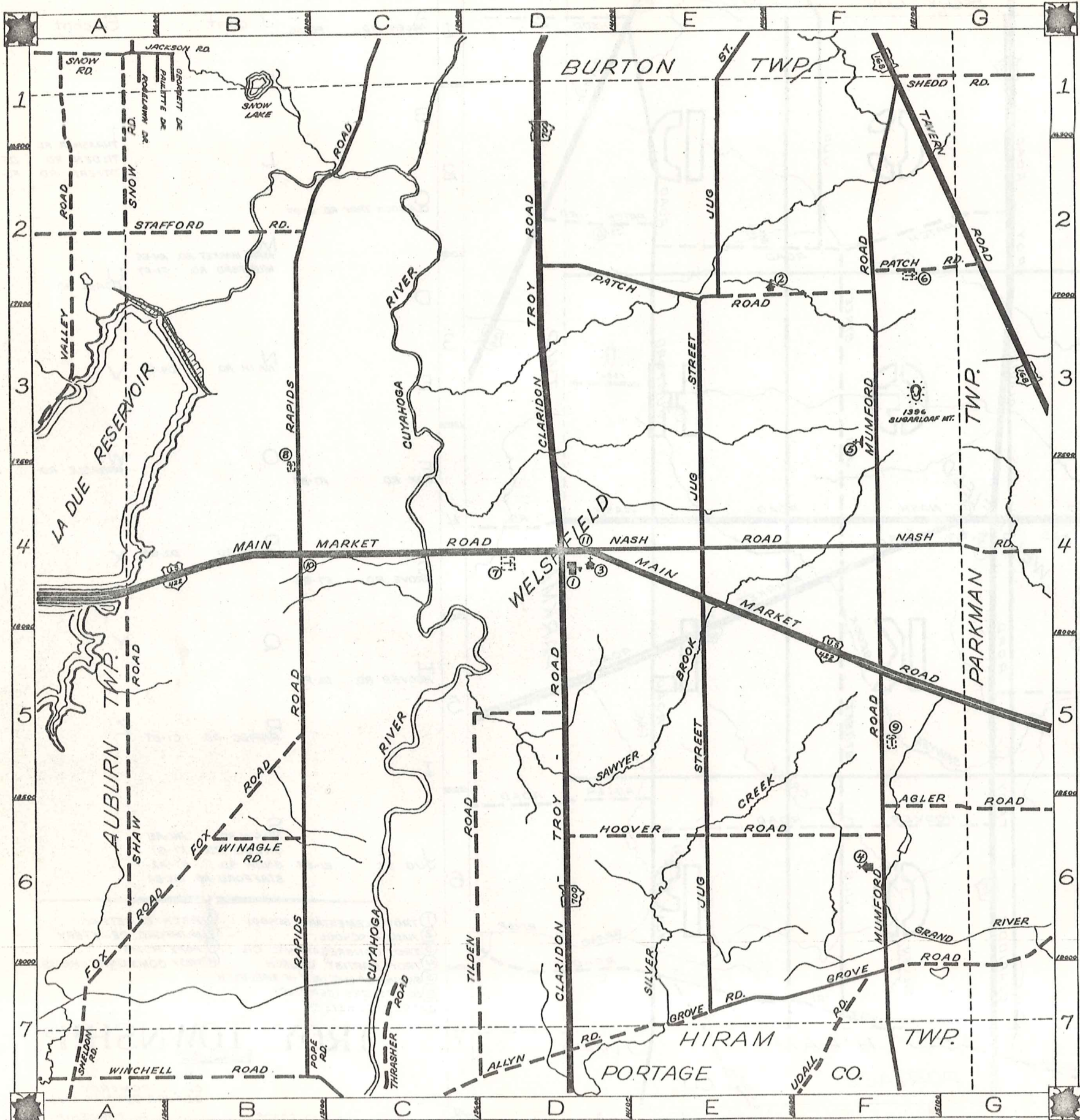
1	A	AGLER RD. F6-G6	J cont.	S cont.
			K	
2	B		L	T THRASHER RD. C7 TILDEN RD. D5-D7 TAVERN RD. F1-G3
	C	CLARIDON TROY RD. DI-D7		
			M	MAIN MARKET RD. A4-G5 MUMFORD RD. F1-F7
3	D		U	UDALL RD. F7
	E		N	NASH RD. D4-G4
4	F	FOX RD. A7-B5	O	W WINAGLE RD. B6
	G		P	PATCH RD. D2-G2
			G	GROVE RD. E7-G6
5	H	HOOVER RD. D6-F6	Q	Y
			R	RAPIDS RD. C1-B7
6	I		S	SHAW RD. A4-A6 SHEDD RD. F1-G1 SNOW RD. A1-A2 STAFFORD RD. A2-B2
	J	JUG ST. E1-E7		

- ① TROY ELEMENTARY SCHOOL
- ② AMISH SCHOOL
- ③ TROY CONGREGATIONAL CH.
- ④ TROY BAPTIST CHURCH
- ⑤ SHRINE OF OUR LADY OF MARIAPOCH
- ⑥ BURROUGHS CEMETERY
- ⑦ TROY CEMETERY
- ⑧ PATCH CEMETERY
- ⑨ MUMFORD CEMETERY
- ⑩ POPE HOME
- ⑪ TROY COMMUNITY HOUSE

TROY TOWNSHIP

SCALE: 1"=2000'
CLYDE POMEROY
GAUGA COUNTY ENGINEER

--- UNPAVED ROADS
--- TOWNSHIP LINE
--- PAVED ROADS
--- COUNTY LINE



ROAD INDEX

1	A	AGLER RD. F6-G6	J cont.	S cont.
			K	
2	B		L	T THRASHER RD. C7 TILDEN RD. D5-D7 TAVERN RD. F1-G3
			M	MAIN MARKET RD. A4-G5 MUMFORD RD. F1-F7
3	C	CLARIDON TROY RD. D1-D7	U	UDALL RD. F7
			N	NASH RD. D4-G4
4	D		O	W WINAGLE RD. B6
			P	PATCH RD. D2-G2
5	E		Q	Y
			R	RAPIDS RD. C1-B7
6	F	FOX RD. A7-B5		Z
			S	SHAW RD. A4-A6 SHEDD RD. F1-G1 SNOW RD. A1-A2 STAFFORD RD. A2-B2
7	G	GROVE RD. E7-G6		
			J	JUG ST. E1-E7

- ① TROY ELEMENTARY SCHOOL
- ② AMISH SCHOOL
- ③ TROY CONGREGATIONAL CH.
- ④ TROY BAPTIST CHURCH
- ⑤ SHRINE OF OUR LADY OF MARIAPOCH
- ⑥ BURROUGHS CEMETERY
- ⑦ TROY CEMETERY
- ⑧ PATCH CEMETERY
- ⑨ MUMFORD CEMETERY
- ⑩ POPE HOME
- ⑪ TROY COMMUNITY HOUSE

TROY TOWNSHIP

SCALE: 1"=2000'
 O.J. ROBINSON
 GAUGA COUNTY ENGINEER

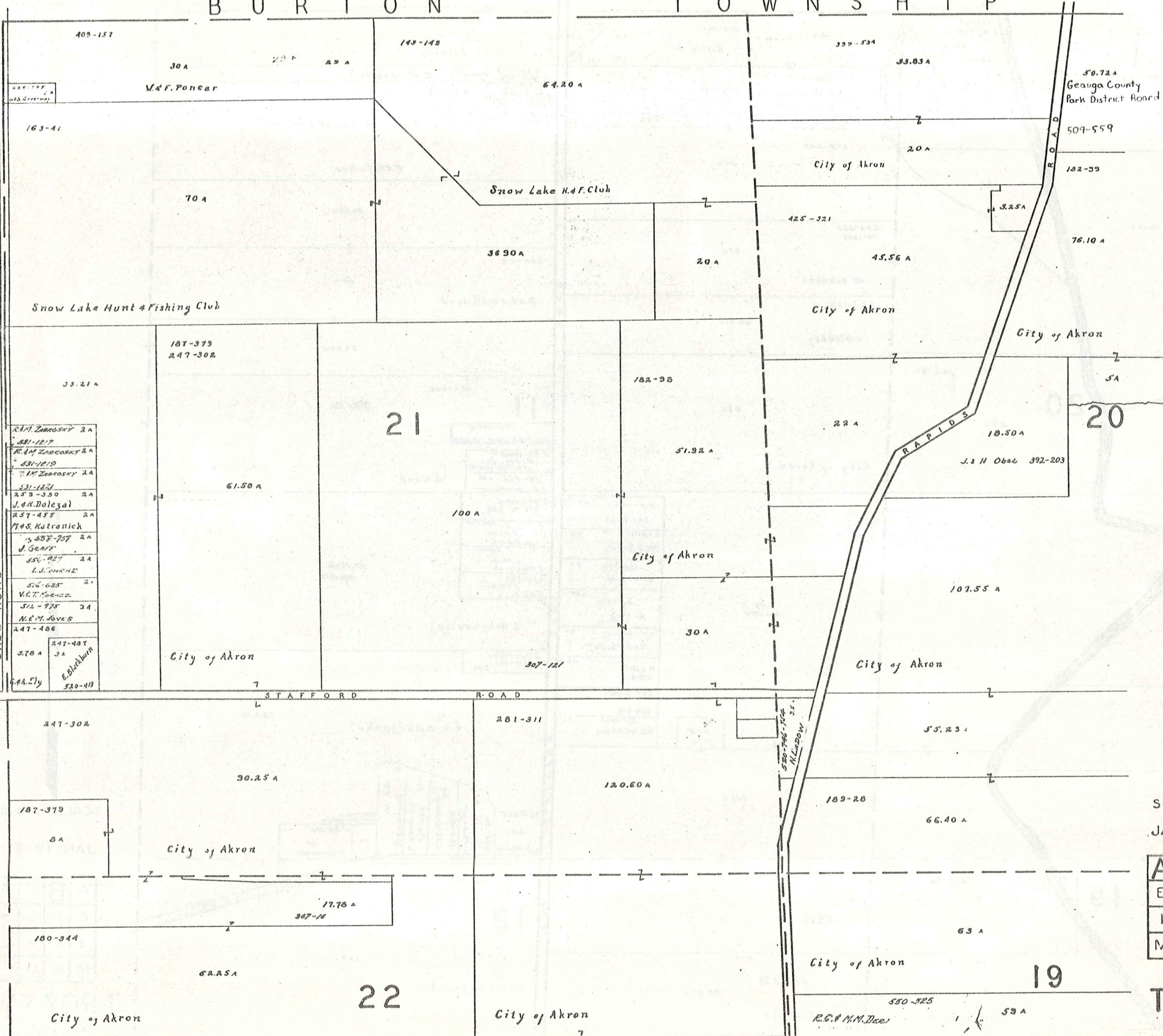
- UNPAVED ROADS
- TOWNSHIP LINE
- PAVED ROADS
- COUNTY LINE



BURTON TOWNSHIP

TOWNSHIP

AUBURN



- R.M. Zareosky 2A
- 531-127
- R.M. Zareosky 2A
- 531-129
- R.M. Zareosky 2A
- 531-127
- 253-350 2A
- J.H. Dolezal
- 257-455 2A
- M.S. Kaltronick
- 537-757 2A
- J. Genie
- 550-927 2A
- L. J. Conner
- 516-635 2A
- V.C.T. Korhcz
- 512-775 2A
- N.E.M. Jove S
- 247-406
- 378 A
- 247-407 3A
- E. Blackburn
- 520-413



SCALE 1" 300'

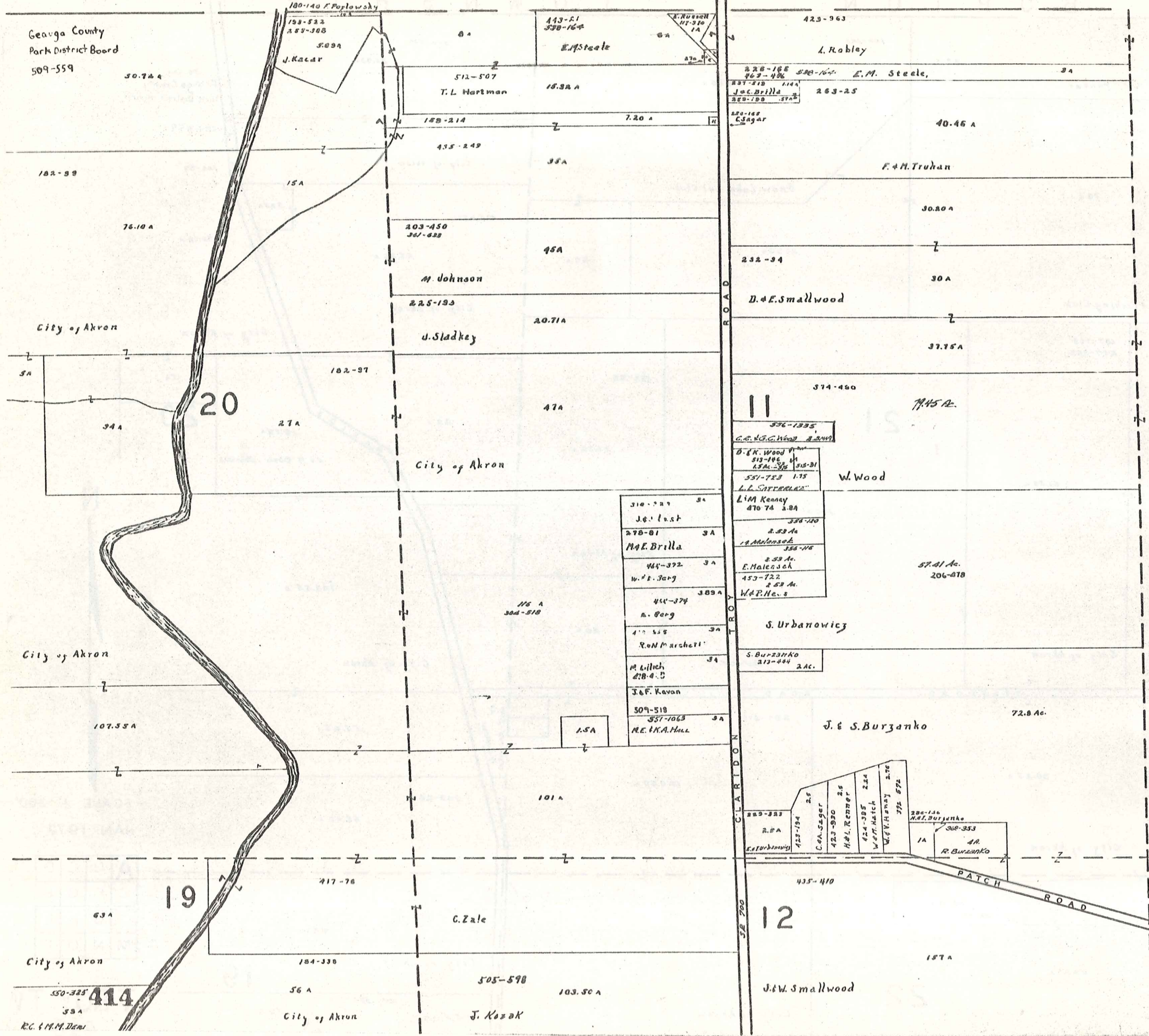
JAN. 1973

A	B	C	D
E	F	G	H
I	J	K	L
M	N	O	P

TROY TW
413

BURTON

TOWNSHIP



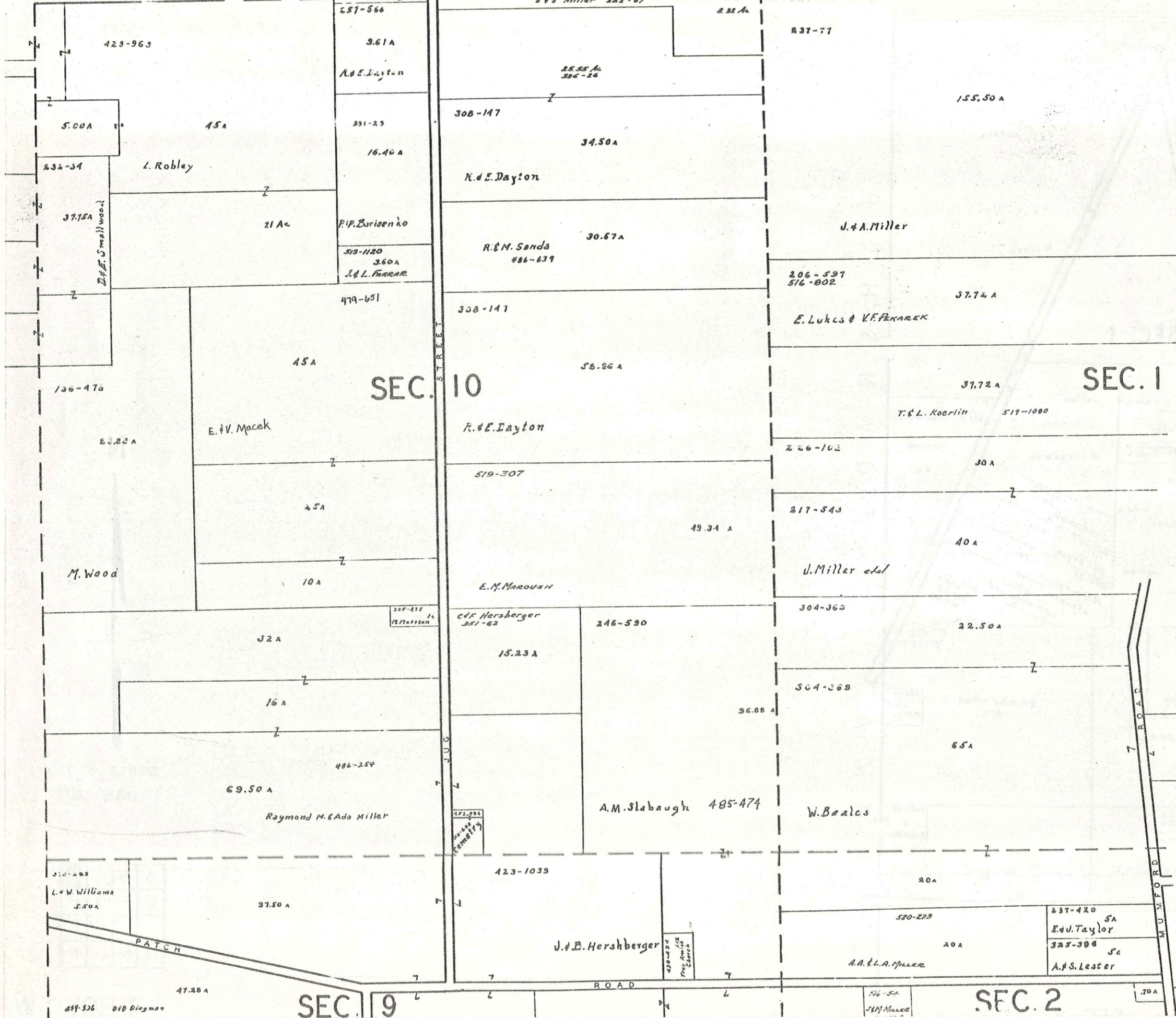
SCALE 1" = 300'

JAN. 1974

A	B	C	D
E	F	G	H
I	J	K	L
M	N	O	P

TROY TWP

BURTON TOWNSHIP



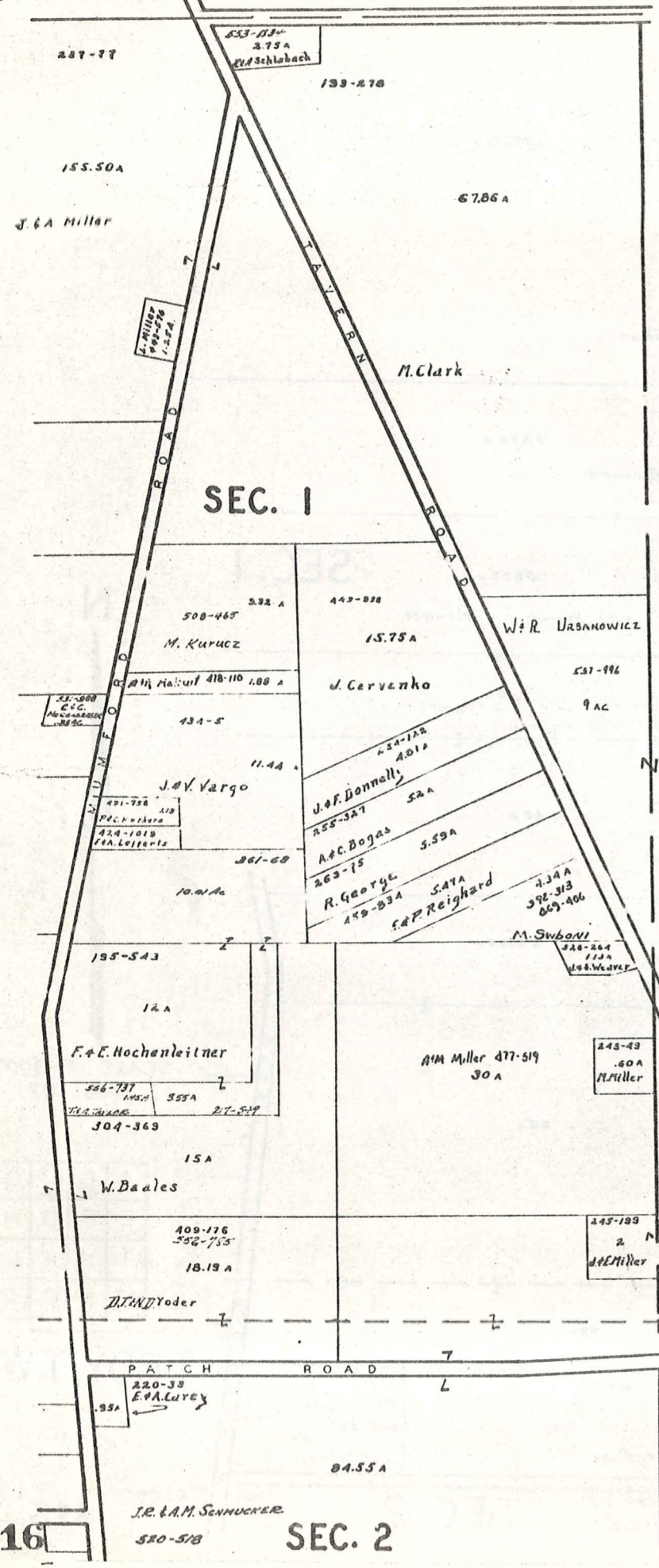
SCALE 1" = 300'
JAN. 1974

A	B	C	D
E	F	G	H
I	J	K	L
M	N	O	P

TROY TWP

BURTON TOWNSHIP

P
A
R
K
M
A
N
T
O
W
N
S
H
I
P



SEC. 1

SEC. 2

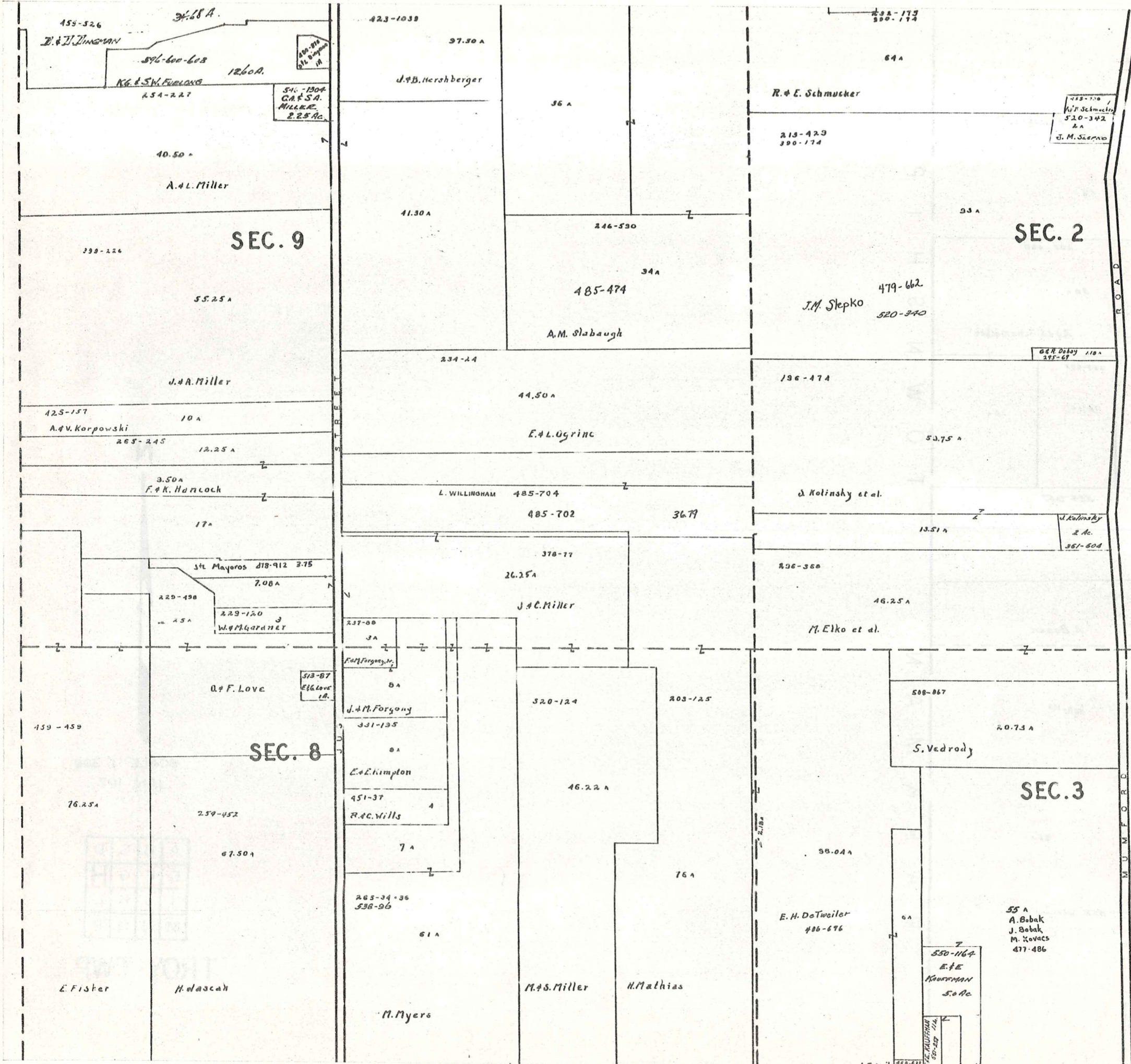


SCALE 1" = 300'
JAN. 1973

A	B	C	D
E	F	G	H
I	J	K	L
M	N	O	P

T ROY TWP

416



SEC. 9

SEC. 2

SEC. 8

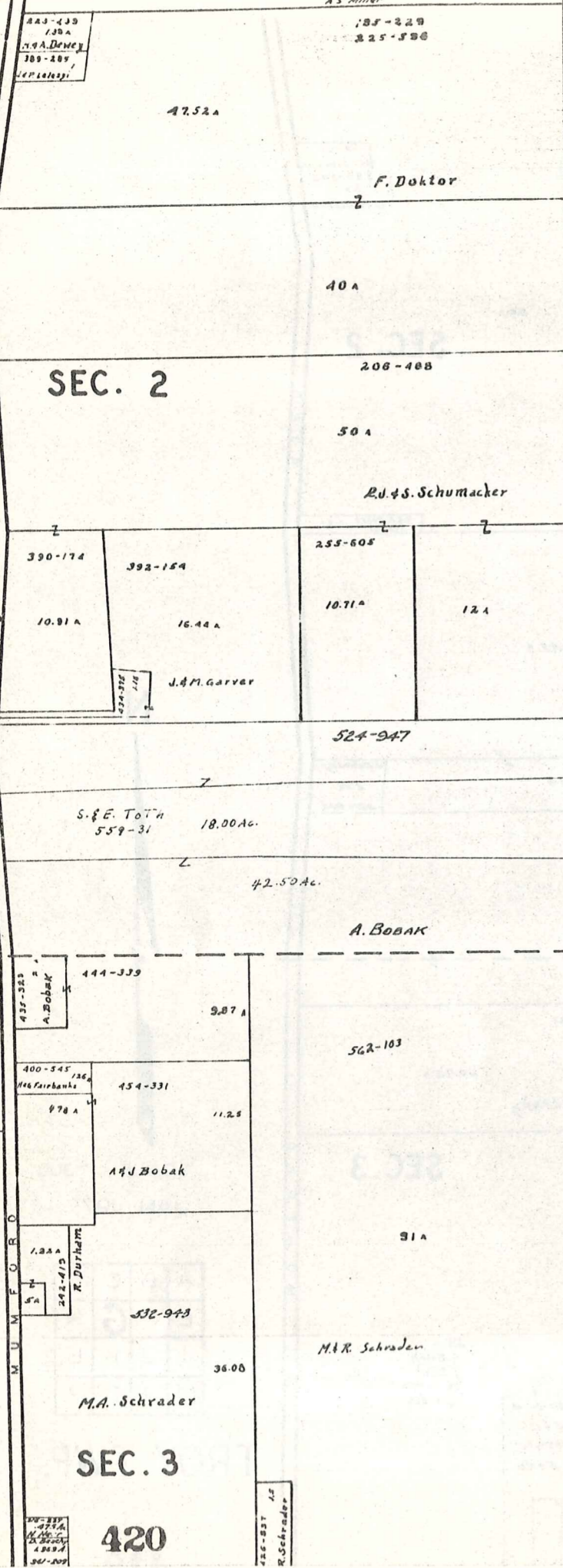
SEC. 3



SCALE 1" = 300'
JAN. 1977

A	B	C	D
E	F	G	H
I	J	K	L
M	N	O	P

TROY TWP.



T
R
O
Y
T
W
P
P
A
R
K
E
C
O
U
N
T
Y
I
N
D
I
A



SCALE 1" = 300'
JAN. 1971

A	B	C	D
E	F	G	H
I	J	K	L
M	N	O	P

TROY TWP

A
U
B
U
R
N
T
O
W
N
S
H
I
P
R
O
A
D

180-638
260-291
221-50
59.20 A
H&D Schultealbert
505-393
37.542 Ac.
L. & F. Little
A. & C. Malinowski
4.22
37.334
City of Akron

SEC. 23

169-14
524-261
104.70 A
515-515
49.45 A
E. & L. ZIRNEL
515-513
41.07 A
E. & L. ZIRNEL
A. Bond et al.

W. Popoy
#19-91
550-669
13A
254-292
13A
R. Nace
25.50 A
210-172
13A
M. M. Sopjack
4.271
28.97 A

192-114
121.75 A
SEC. 18
Geauga Co. Lumm.

170-354
42.25 A
A. Soika
272-592
48.86 A
E. Brigham
530-130
114A
K. Matsak
559-111
162A
6.80 A
251-540
D. F. Kubista
184-567
33.20 A
169-410
123.75 A
City of Akron

120-171
247-483
265-214
70 A
D. & R. Shaw
19A
556-326
100.54 A
M. & A. Manning

231-597
3.63 A
A. & L. Mavesh
D. Hranicek SA
532-519
SA
345-392
E. E. Artko
M. SMIER
537-910
2.9 A
202-552
16.35 A
L. Gosper
37.78 A
City of Akron

SEC. 24

E. J. HACH
20 Ac.
551-609
10.0 Ac.
559-110
A. & V. WEBBER
23.5 Ac.
557-1105
431-701
R. Null
53.50 A
556-428
133.96 Ac.
E. R. ISMOND

255-277
68.22 A
L. & M. Ridenour
222-334
33.05 A
S. & V. Kralik
373-306
16 A
L. Whitney
179-465
41.25 A
City of Akron
182-117
24 A
City of Akron
200-2
103 A
S. Hull

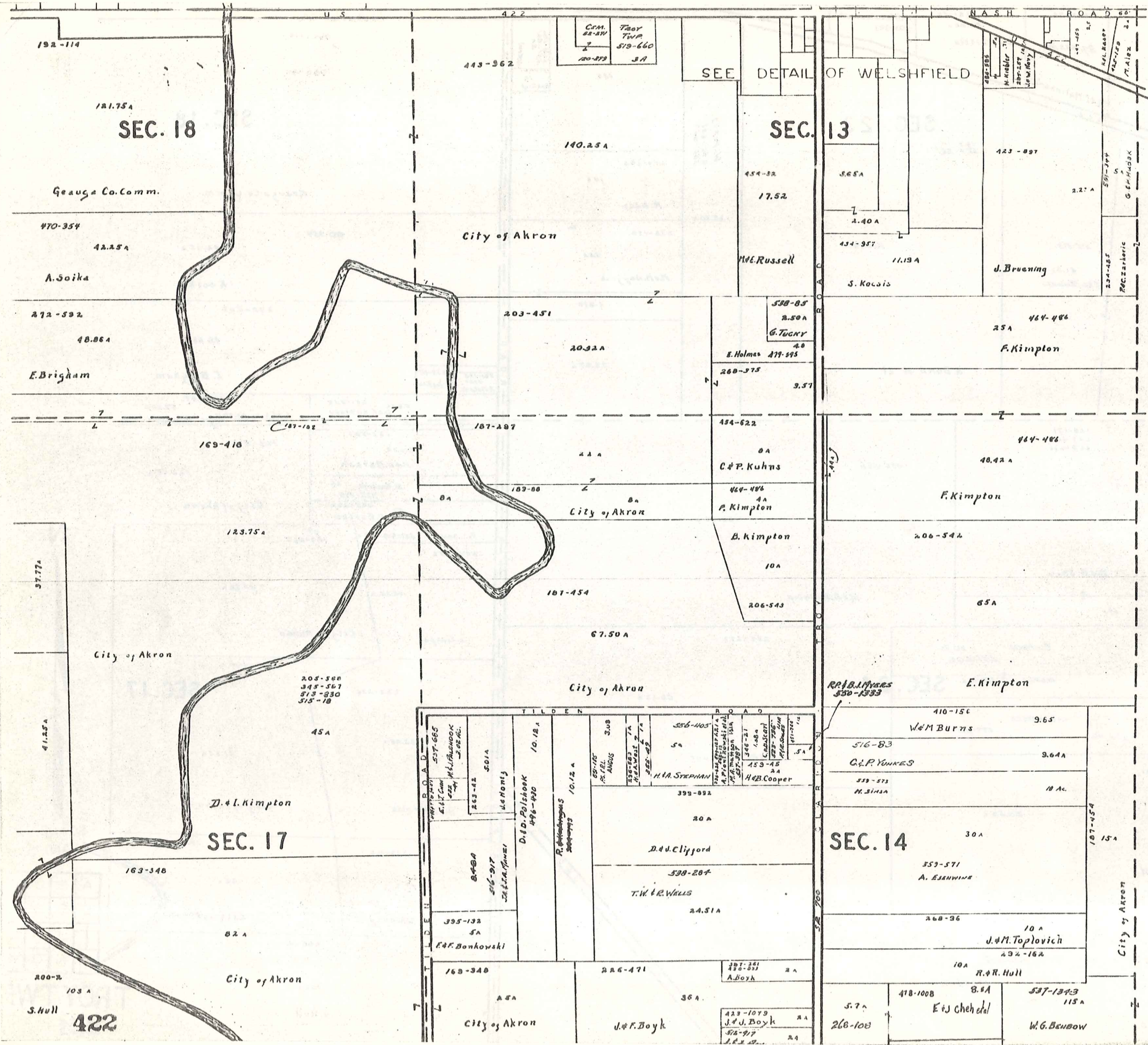
SEC. 17



SCALE 1"=30'
JAN. 19...

A	B	C	D
E	F	G	H
I	J	K	L
M	N	O	P

TROY TWE
421



SCALE 1" = 300'
JAN. 1977

A	B	C	D
E	F	G	H
I	J	K	L
M	N	O	P

TROY TWP

CFM. 52-2W
Twp 519-660
120-273 3A

SEE DETAIL OF WELSHFIELD

SEC. 13

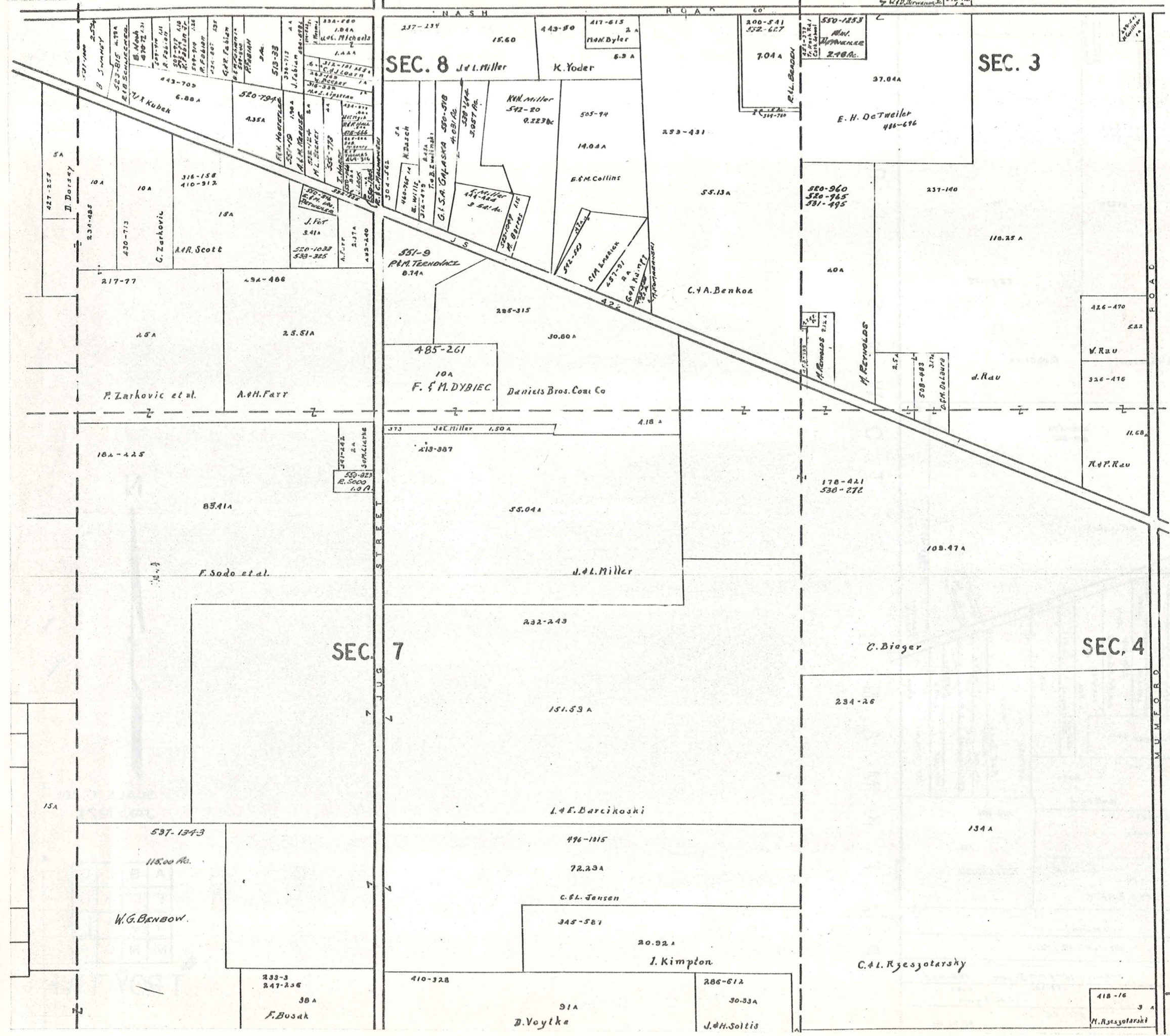
121.75A
SEC. 18

538-85
2.50A
G. TUCKY

SEC. 17

SEC. 14

422

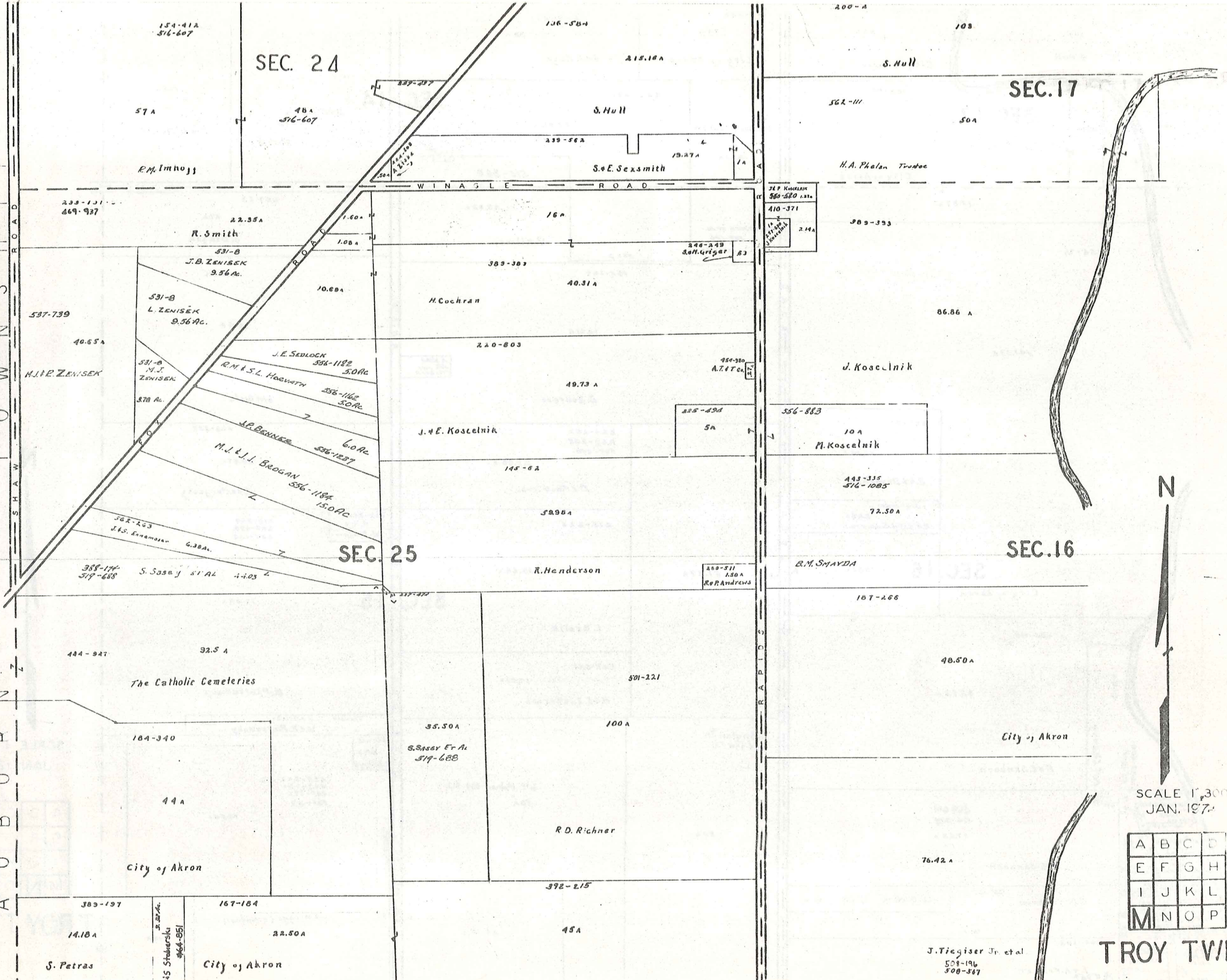


SCALE 1" = 300'
JAN. 1974

A	B	C	D
E	F	G	H
I	J	K	L
M	N	O	P

TROY TWP
423

A
U
B
U
R
N
T
O
W
N
S
H
I
P
R
O
A
D



SEC. 24

SEC. 17

SEC. 25

SEC. 16

The Catholic Cemeteries

City of Akron

City of Akron

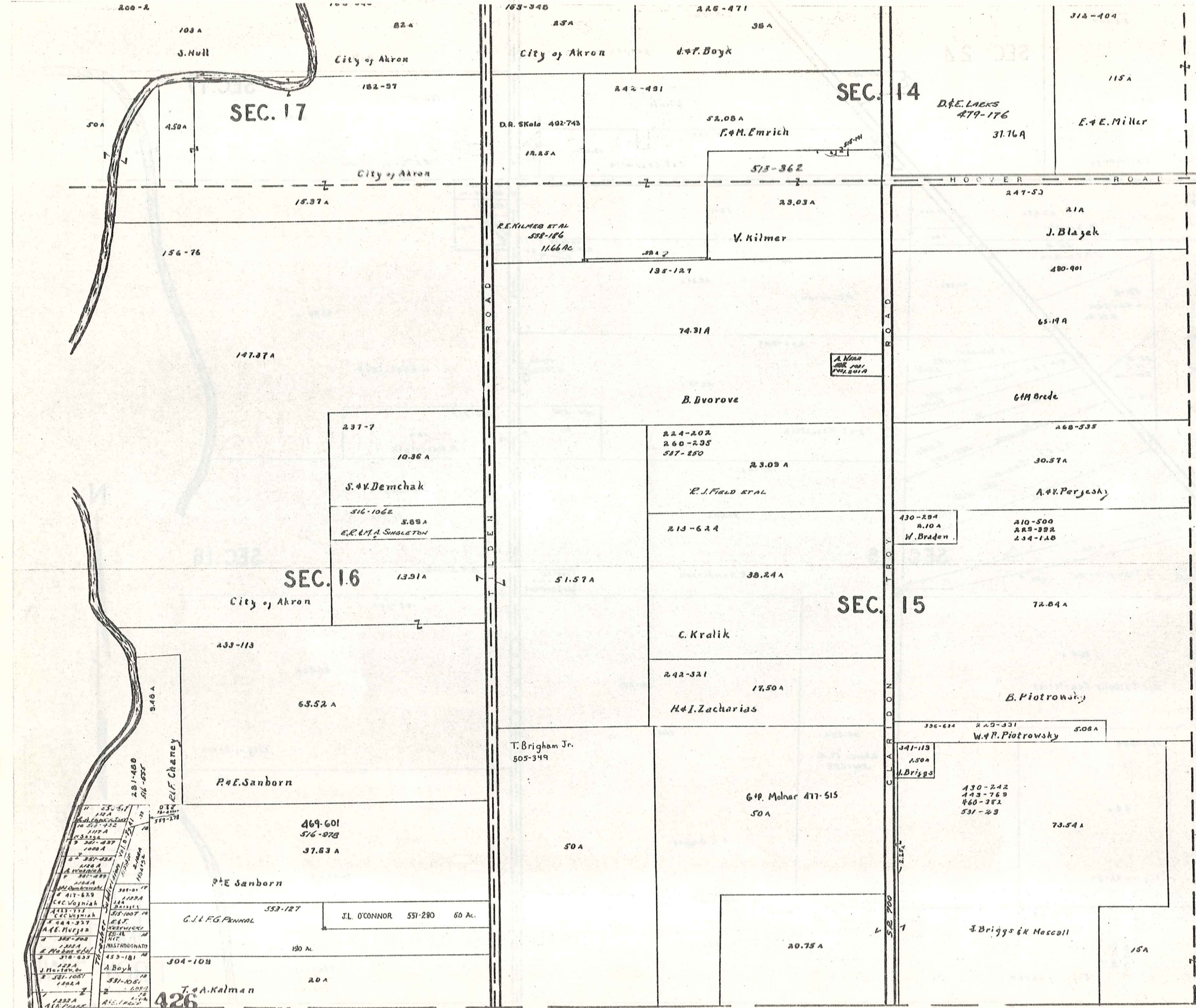
City of Akron



SCALE 1"=300'
JAN. 1974

A	B	C	D
E	F	G	H
I	J	K	L
M	N	O	P

TROY TWP.



SCALE 1" = 300'
JAN. 1974

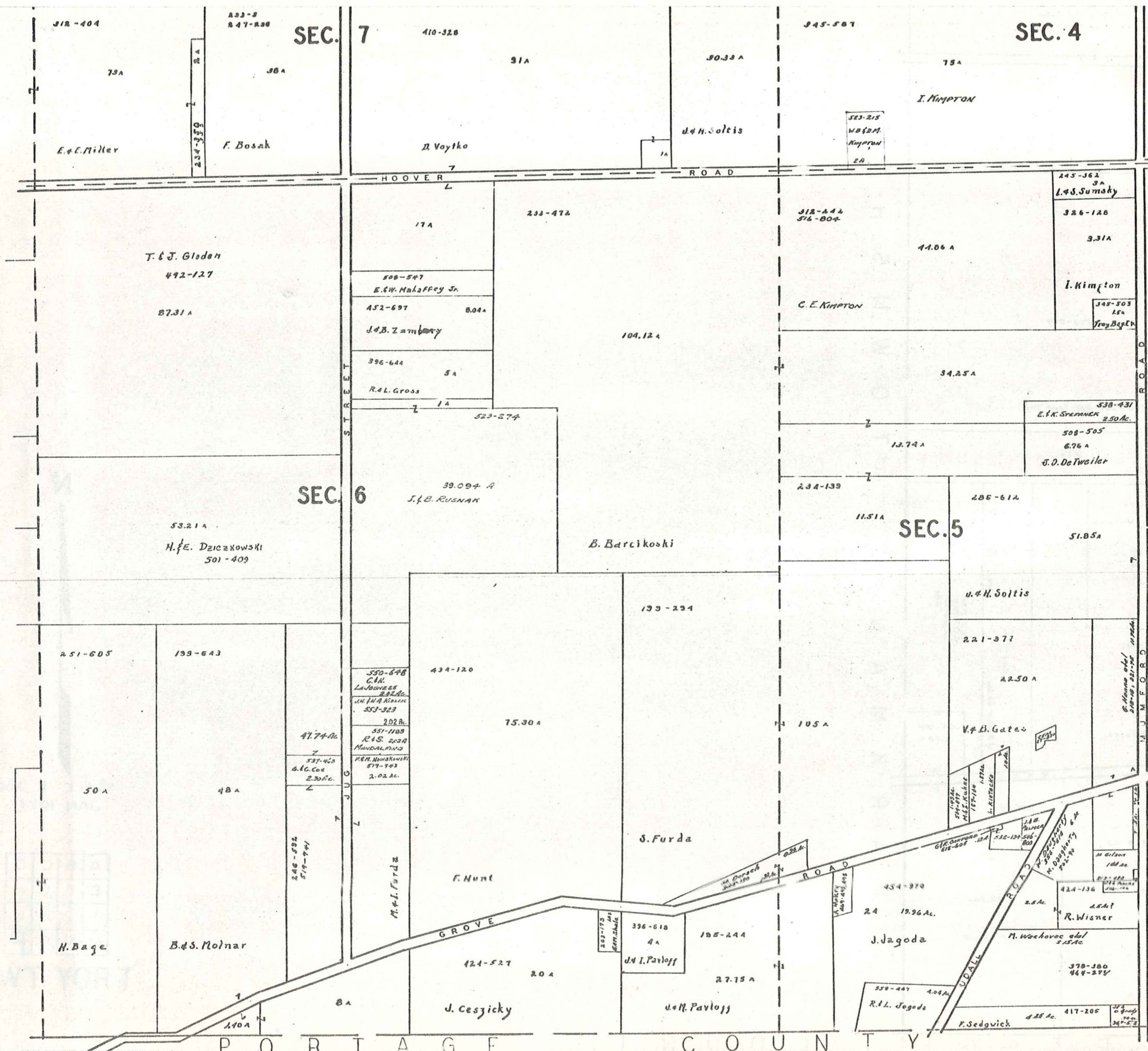
A	B	C	D
E	F	G	H
I	J	K	L
M	N	O	P

TROY TWP

426

11	230-517	112 A	Ed. G. G. G. G.
12	230-518	112 A	Ed. G. G. G. G.
13	230-519	112 A	Ed. G. G. G. G.
14	230-520	112 A	Ed. G. G. G. G.
15	230-521	112 A	Ed. G. G. G. G.
16	230-522	112 A	Ed. G. G. G. G.
17	230-523	112 A	Ed. G. G. G. G.
18	230-524	112 A	Ed. G. G. G. G.
19	230-525	112 A	Ed. G. G. G. G.
20	230-526	112 A	Ed. G. G. G. G.
21	230-527	112 A	Ed. G. G. G. G.
22	230-528	112 A	Ed. G. G. G. G.
23	230-529	112 A	Ed. G. G. G. G.
24	230-530	112 A	Ed. G. G. G. G.
25	230-531	112 A	Ed. G. G. G. G.
26	230-532	112 A	Ed. G. G. G. G.
27	230-533	112 A	Ed. G. G. G. G.
28	230-534	112 A	Ed. G. G. G. G.
29	230-535	112 A	Ed. G. G. G. G.
30	230-536	112 A	Ed. G. G. G. G.
31	230-537	112 A	Ed. G. G. G. G.
32	230-538	112 A	Ed. G. G. G. G.
33	230-539	112 A	Ed. G. G. G. G.
34	230-540	112 A	Ed. G. G. G. G.
35	230-541	112 A	Ed. G. G. G. G.
36	230-542	112 A	Ed. G. G. G. G.
37	230-543	112 A	Ed. G. G. G. G.
38	230-544	112 A	Ed. G. G. G. G.
39	230-545	112 A	Ed. G. G. G. G.
40	230-546	112 A	Ed. G. G. G. G.
41	230-547	112 A	Ed. G. G. G. G.
42	230-548	112 A	Ed. G. G. G. G.
43	230-549	112 A	Ed. G. G. G. G.
44	230-550	112 A	Ed. G. G. G. G.
45	230-551	112 A	Ed. G. G. G. G.
46	230-552	112 A	Ed. G. G. G. G.
47	230-553	112 A	Ed. G. G. G. G.
48	230-554	112 A	Ed. G. G. G. G.
49	230-555	112 A	Ed. G. G. G. G.
50	230-556	112 A	Ed. G. G. G. G.
51	230-557	112 A	Ed. G. G. G. G.
52	230-558	112 A	Ed. G. G. G. G.
53	230-559	112 A	Ed. G. G. G. G.
54	230-560	112 A	Ed. G. G. G. G.
55	230-561	112 A	Ed. G. G. G. G.
56	230-562	112 A	Ed. G. G. G. G.
57	230-563	112 A	Ed. G. G. G. G.
58	230-564	112 A	Ed. G. G. G. G.
59	230-565	112 A	Ed. G. G. G. G.
60	230-566	112 A	Ed. G. G. G. G.
61	230-567	112 A	Ed. G. G. G. G.
62	230-568	112 A	Ed. G. G. G. G.
63	230-569	112 A	Ed. G. G. G. G.
64	230-570	112 A	Ed. G. G. G. G.
65	230-571	112 A	Ed. G. G. G. G.
66	230-572	112 A	Ed. G. G. G. G.
67	230-573	112 A	Ed. G. G. G. G.
68	230-574	112 A	Ed. G. G. G. G.
69	230-575	112 A	Ed. G. G. G. G.
70	230-576	112 A	Ed. G. G. G. G.
71	230-577	112 A	Ed. G. G. G. G.
72	230-578	112 A	Ed. G. G. G. G.
73	230-579	112 A	Ed. G. G. G. G.
74	230-580	112 A	Ed. G. G. G. G.
75	230-581	112 A	Ed. G. G. G. G.
76	230-582	112 A	Ed. G. G. G. G.
77	230-583	112 A	Ed. G. G. G. G.
78	230-584	112 A	Ed. G. G. G. G.
79	230-585	112 A	Ed. G. G. G. G.
80	230-586	112 A	Ed. G. G. G. G.
81	230-587	112 A	Ed. G. G. G. G.
82	230-588	112 A	Ed. G. G. G. G.
83	230-589	112 A	Ed. G. G. G. G.
84	230-590	112 A	Ed. G. G. G. G.
85	230-591	112 A	Ed. G. G. G. G.
86	230-592	112 A	Ed. G. G. G. G.
87	230-593	112 A	Ed. G. G. G. G.
88	230-594	112 A	Ed. G. G. G. G.
89	230-595	112 A	Ed. G. G. G. G.
90	230-596	112 A	Ed. G. G. G. G.
91	230-597	112 A	Ed. G. G. G. G.
92	230-598	112 A	Ed. G. G. G. G.
93	230-599	112 A	Ed. G. G. G. G.
94	230-600	112 A	Ed. G. G. G. G.
95	230-601	112 A	Ed. G. G. G. G.
96	230-602	112 A	Ed. G. G. G. G.
97	230-603	112 A	Ed. G. G. G. G.
98	230-604	112 A	Ed. G. G. G. G.
99	230-605	112 A	Ed. G. G. G. G.
100	230-606	112 A	Ed. G. G. G. G.

D E W I T T C O U N T Y



SCALE 1" = 300'
 JAN. 1977

A	B	C	D
E	F	G	H
I	J	K	L
M	N	O	P

TROY TWE

552-72
D.E. & M.A. ANNA
32.86 Ac.
SEC. 4

ALGER ROAD

451-19

D. M. ANNA

335-91
M.R. McDevitt

100.6A

508-459

33A-370
J. A. A
J. Patterson

Tom-Lea Heritage Inc.

304-548
E. M. Reed

21A

206-612

51.05A
SEC. 5

J. H. Soltis

237-76

31.77A

B. Gates

233-939
J. STEARLE ET AL

529-871
529-360
D. Gates
20A

558-324
4.02A

558-324

335-23

45.05A

52.50A

V. D. GATES, JR.

M. A. Johnson

428

P
A
R
K
M
A
N
T
O
W
N
S
H
I
P
C
O
U
N
T
Y



SCALE 1" = 300'
JAN. 1974

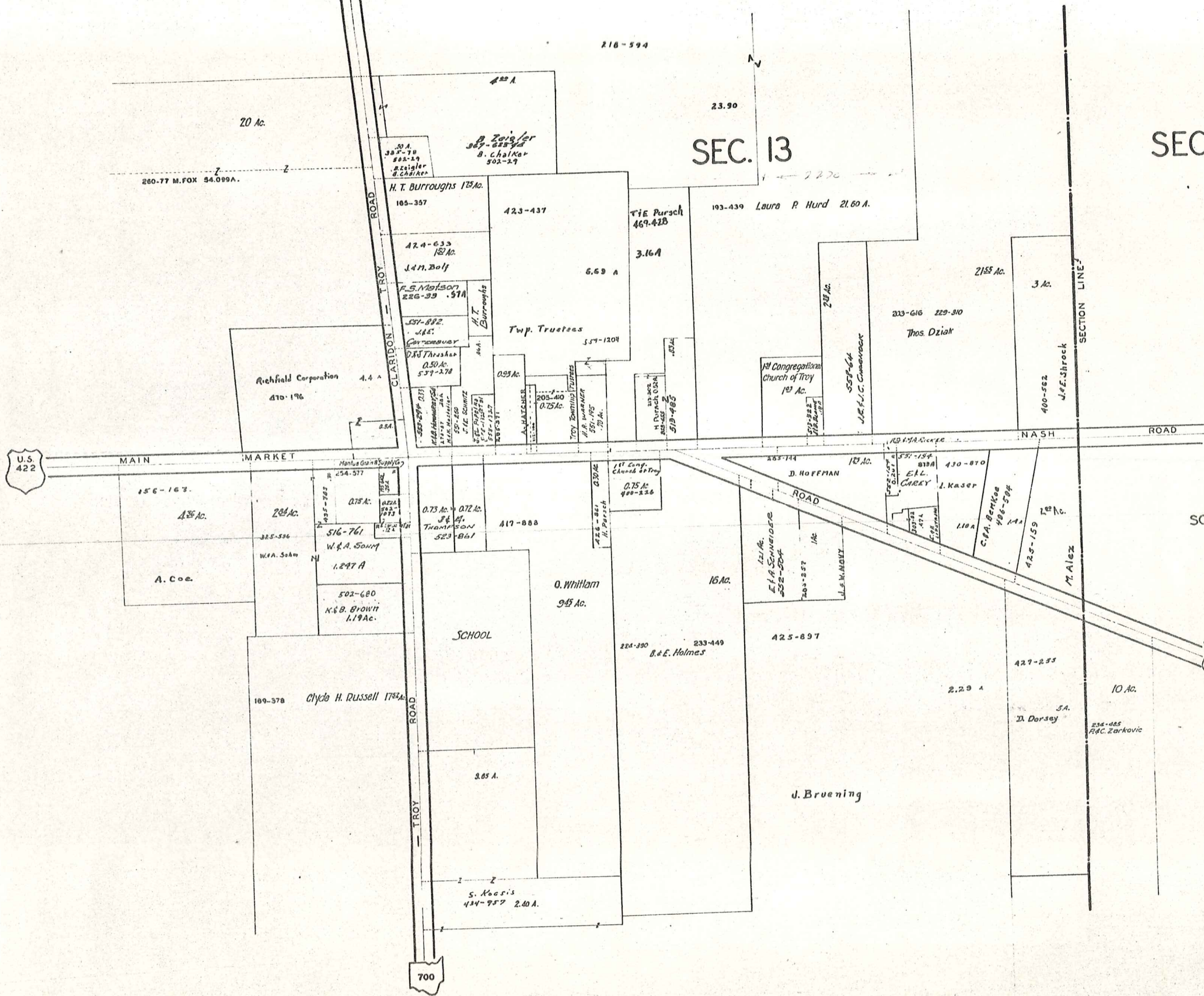
A	B	C	D
E	F	G	H
I	J	K	L
M	N	O	P

T ROY TWF

WELSHFIELD
SEC.13

TROY TP.

WELSHFIELD
SEC.13



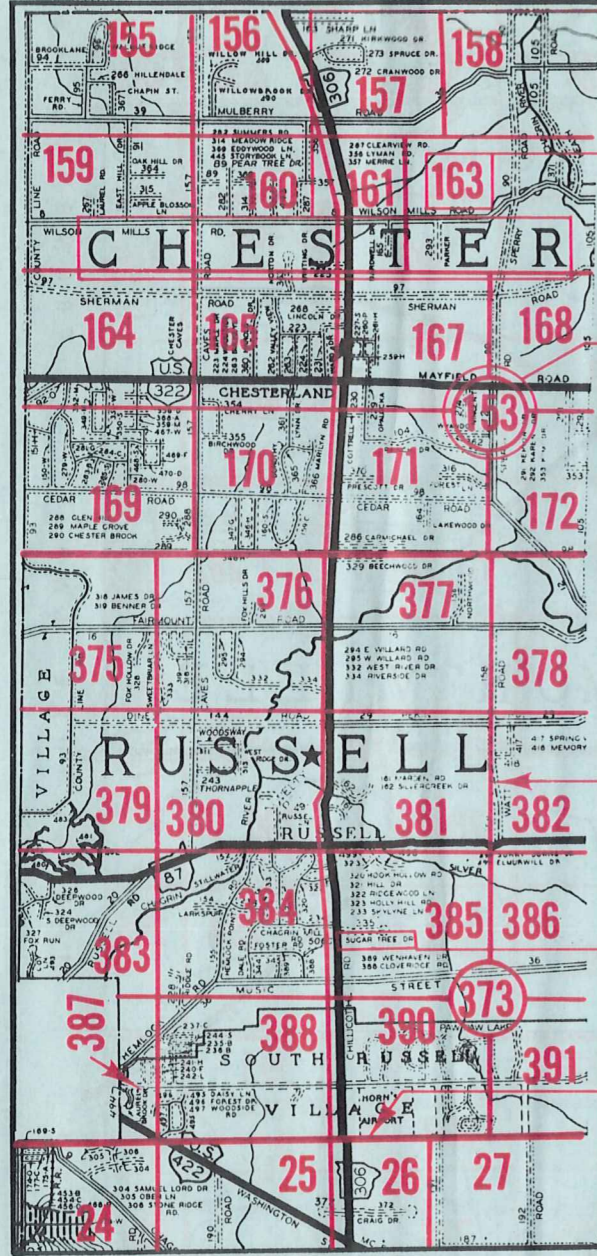
SEC. 8

SCALE 1 in. = 2.5 ch. = 165 ft.

JAN. 1, 1871

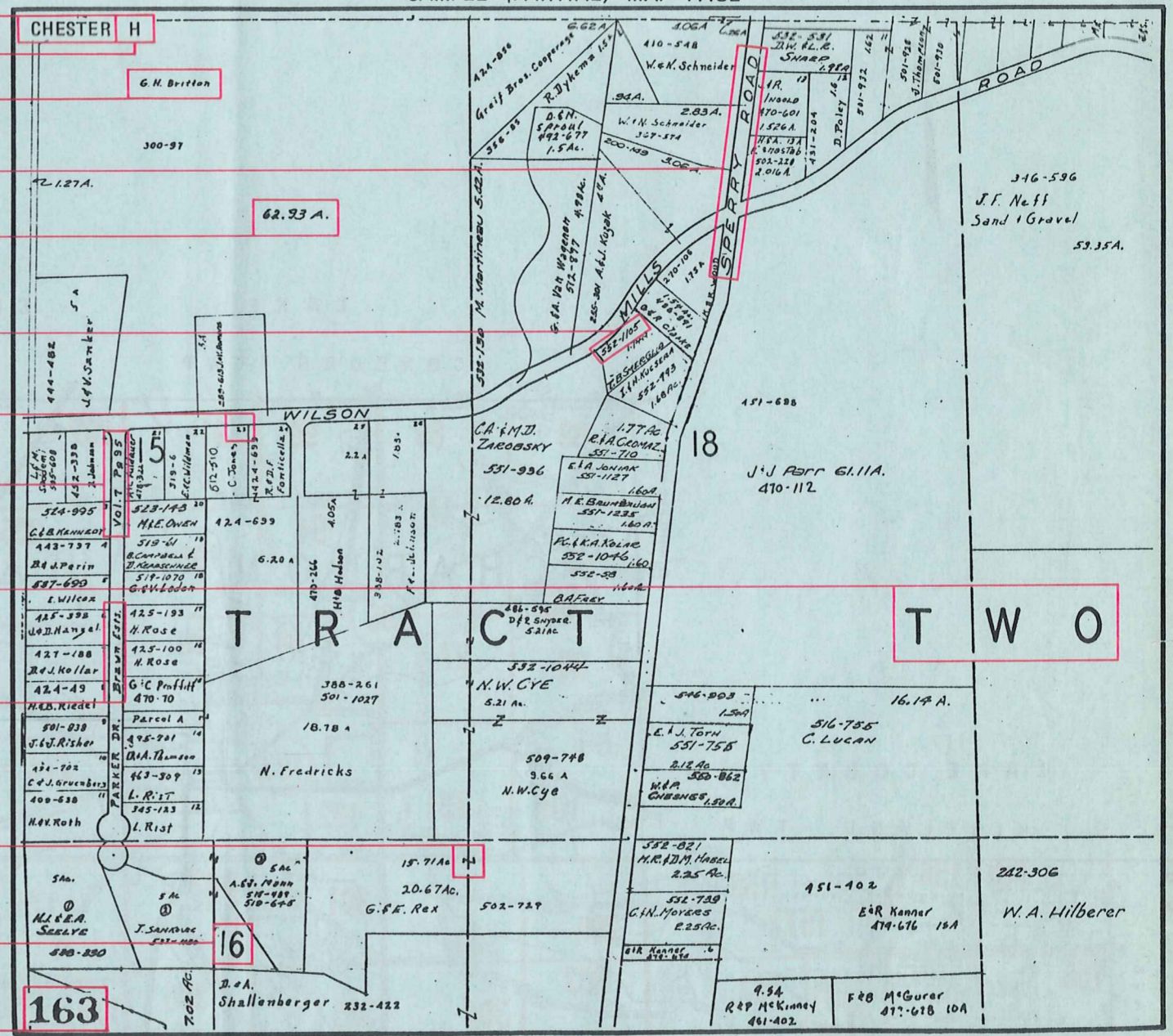
Explanation and Use Sheet for Geauga County, Ohio

SAMPLE (PARTIAL) COUNTY INDEX MAP



- Township Name
- Map Page Number (Or Letter)
- Owners Name
- Street Name
- Acreage
- Municipality Index Beginning Atlas Page Number
- Deed Book & Page
- Subdivision Lot Number
- Plat Book & Page
- Tract Number
- Atlas Page Boundary
- Subdivision Name
- Street Name
- Denotes Continuous Ownership
- Municipality Index Atlas Page Boundary
- Tract Lot Number
- Atlas Page Number

SAMPLE (PARTIAL) MAP PAGE



USE OF THE MAP VOLUME

1. LOCATE THE GENERAL AREA OF INTEREST ON THE COUNTY INDEX MAP, ATLAS PAGE 'B'.
2. A. IF PROPERTY IS IN A TOWNSHIP, NOTE THE ATLAS PAGE NUMBER. TURN TO THE PAGE INDICATED AND LOCATE SPECIFIC PARCEL OF INTEREST.
 - NOTE: ON SOME MAPS YOU MAY BE REFERRED TO A DETAIL SHEET SHOWING AN ENLARGEMENT OF THE AREA. THESE MAPS ARE FOUND AT THE END OF THE REGULAR MAP PAGES IN EACH TOWNSHIP EITHER IN ALPHABETICAL OR NUMERICAL SEQUENCE.
- B. IF PROPERTY IS IN A MUNICIPALITY, REFER TO THE TABLE OF CONTENTS, ATLAS PAGE 'C', AND NOTE THE BEGINNING ATLAS PAGE NUMBER FOR THE MUNICIPALITY OF INTEREST.
 - (1) TURN TO THE PAGE INDICATED. ON THIS PAGE WILL APPEAR AN INDEX MAP FOR THAT MUNICIPALITY.
 - (2) LOCATE SPECIFIC AREA OF INTEREST AND NOTE THE MAP PAGE NUMBER.
 - NOTE: DO NOT CONFUSE THE MAP PAGE NUMBER WITH THE ATLAS PAGE NUMBER IN THESE MUNICIPALITIES.
 - (3) FOLLOW EITHER ALPHABETICAL OR NUMERICAL SEQUENCE TO THE MAP PAGE INDICATED AND LOCATE SPECIFIC PARCEL OF INTEREST.